

**RUSH  
WITT &  
WILSON**



**4 Lychgate Close, Bexhill-On-Sea, East Sussex TN40 2EW  
£385,000 Freehold**

**A bright and spacious three bedroom detached bungalow comprising dual aspect living room, fitted kitchen, separate cloakroom, family bathroom and three bedrooms. Other internal benefits include gas central heating system, double glazed windows and doors throughout. Externally the property boasts private front and rear gardens, off road parking and garage. Situated in this highly sought after residential location of Chantry, Bexhill, vacant possession. Viewing comes highly recommended by Rush Witt & Wilson sole agents, Bexhill.**



### **Entrance Porch**

With entrance door leading to the entrance hallway with obscure glass panelled entrance door, radiator, access to loft space via loft hatch, storage cupboard housing the gas central heating boiler.

### **Living Room**

22'11 x 12'9 (6.99m x 3.89m)

Dual aspect with double glazed windows to the front and double glazed sliding doors and giving access onto the rear garden, radiator, serving hatch through from the kitchen.

### **Kitchen**

10'5 x 9'10 (3.18m x 3.00m )

Fitted kitchen with a range of matching wall and base level units, laminate straight edge worktop surfaces, sink with drainer and mixer tap, space for free standing fridge and freezer, space for free standing cooker, space for washing machine, serving hatch through to the living room, double glazed windows overlooking the rear garden with obscured glass panelled door giving access onto the rear garden.

### **Bedroom One**

13'1 x 12'1 (3.99m x 3.68m)

Double glazed windows to the front elevation, radiator, fitted bedroom wardrobes and drawers.

### **Bedroom Two**

9'10 x 9'10 (3.00m x 3.00m )

Double glazed window to the rear elevation, radiator.

### **Bedroom Three**

9'5 x 8'11 (2.87m x 2.72m )

Double glazed window to the front elevation, radiator.

### **Separate WC**

With suite comprising wc with low level flush, part tiled walls, obscured glass panelled window to the rear.

### **Bathroom**

Modern suite comprising vanity unit and wash hand basin and mixer tap, panelled bath with chrome hot and cold tap with shower over the bath, part tiled walls, radiator, obscured double glazed window to the rear elevation.

### **Outside**

#### **Front Garden**

Mainly laid to lawn with various plants, shrubs and small trees.

#### **Off Road Parking**

Driveway to the front of the property providing off road parking.

#### **Garage**

#### **Rear Garden**

Low maintenance and mainly laid to patio, suitable for alfresco dining and is enclosed to all sides with fencing, mature shrubbery and flower beds, side access is available, a timber framed garden shed.

#### **Agents Note**

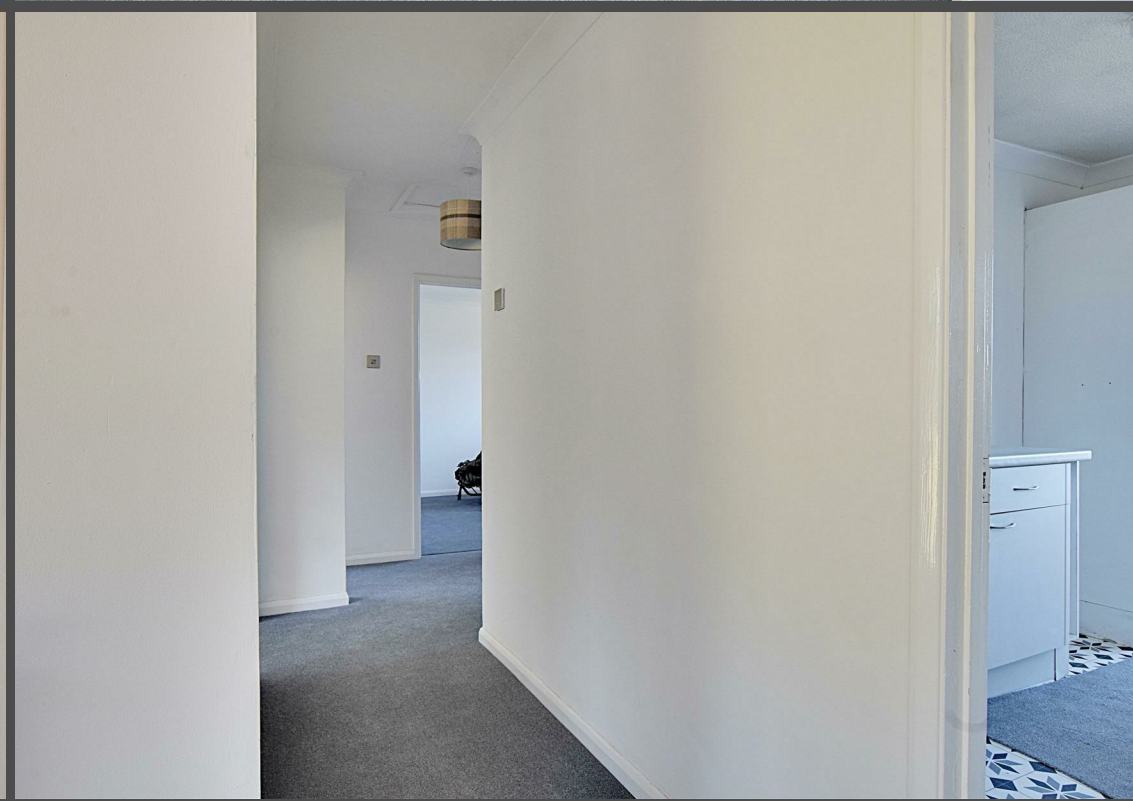
None of the services or appliances mentioned in these sale particulars have been tested.

It should also be noted that measurements quoted are given for guidance only and are approximate and should not be relied upon for any other purpose.

Council Tax Band – D

A property may be subject to restrictive covenants and a copy of the title documents are available for inspection.

If you are seeking a property for a particular use or are intending to make changes please check / take appropriate legal advice before proceeding.

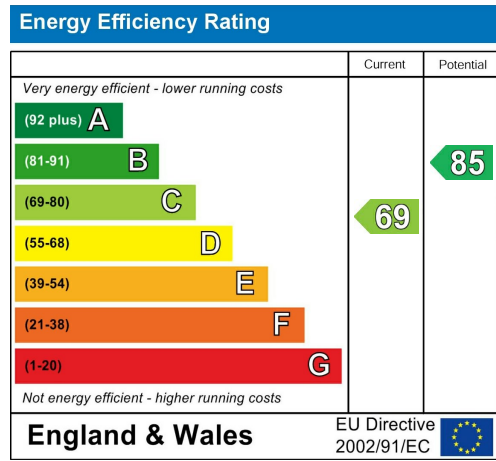
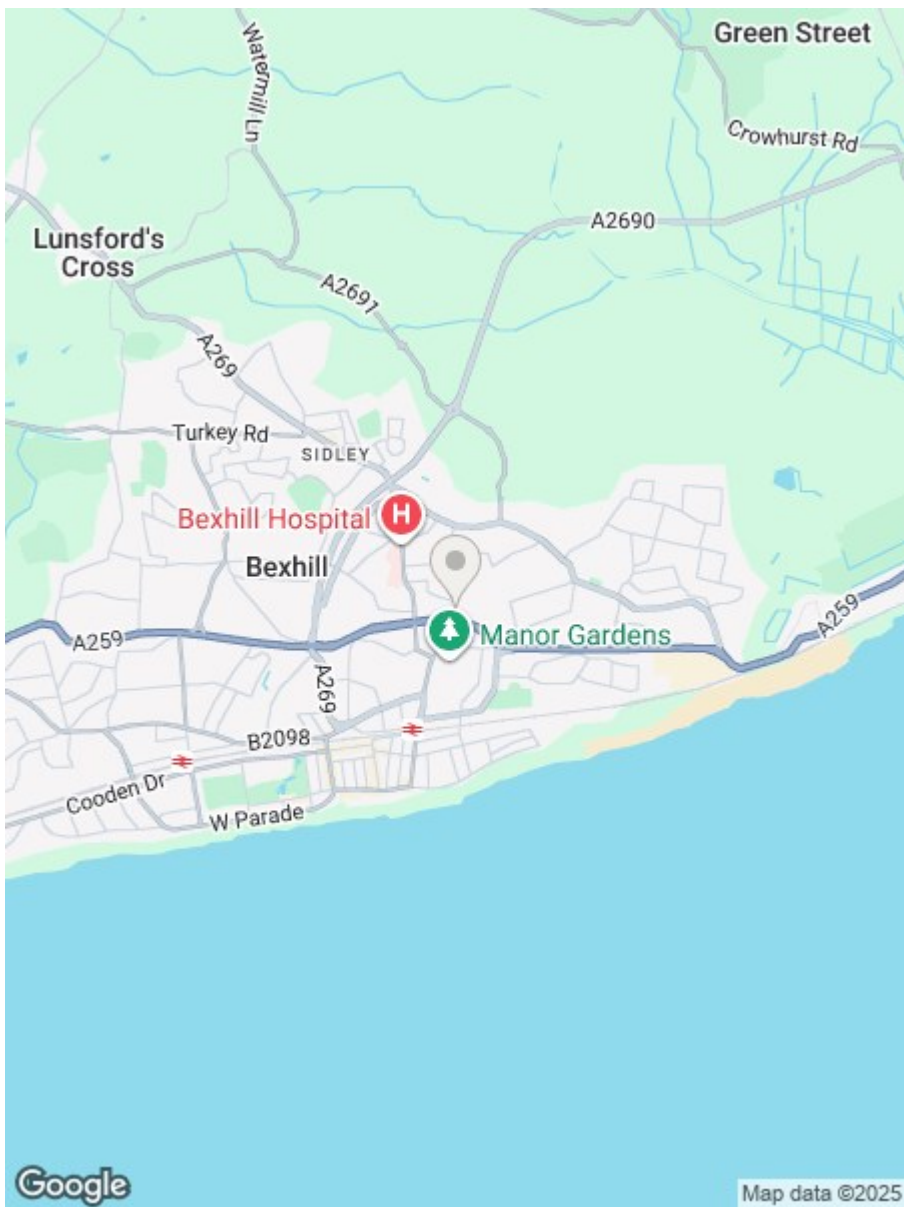


GROUND FLOOR  
1022 sq.ft. (94.9 sq.m.) approx.



TOTAL FLOOR AREA : 1022 sq.ft. (94.9 sq.m.) approx.

Whilst every attempt has been made to ensure the accuracy of the floorplan contained here, measurements of doors, windows, rooms and any other items are approximate and no responsibility is taken for any error, omission or mis-statement. This plan is for illustrative purposes only and should be used as such by any prospective purchaser. The services, systems and appliances shown have not been tested and no guarantee as to their operability or efficiency can be given.  
Made with Metropix ©2025



**RUSH  
WITT &  
WILSON**

**Residential Estate Agents**  
Lettings & Property Management



**3 Devonshire Road**  
**Bexhill-on-Sea**  
**East Sussex**  
**TN40 1AH**  
**Tel: 01424 225588**  
**bexhill@rushwittwilson.co.uk**  
**www.rushwittwilson.co.uk**